

Urban living. perfectly Designed



Studio Apartments for Elite Class

IF IT'S **BAPU NAGAR.**  
THAT SAYS EVERYTHING  
**NO NEED** FOR *More* DETAILS





PRIME LOCATION  
OF JAIPUR



STUDIO  
APARTMENTS  
FOR ELITE CLASS



SUPERB  
ROOFTOP  
EXPERIENCE

  
**Guru Kripa**  
**AARISE**  
Studio Apartments for Elite Class



## Gracefully Designed Studios For Thoughtful living

Contemporary entrance gate to the soft-lit, modern lobby - every corner of Guru Kripa Arise is a reflection of thoughtful luxury. The transition from outside to inside is seamless, filled with the quiet charm of soft tones, fine materials, and inviting design.



*Lifestyle*

that celebrates  
everyday ease

ENTRANCE LOBBY



Perfectly  
POSITIONED.  
SO YOUR STUDIO  
MEETS EVERY  
NEED EFFORTLESSLY.

#### Green & Heritage Landmarks

- Sawai Mansingh Stadium – 2 min walk
- Amar Jawan Jyoti – Nearby patriotic landmark
- Rambagh Palace – Historic 5-star heritage hotel
- Lily Pool & Rambagh Golf Club – Elite recreation options
- Moti Dungri Ganesh Temple & Birla Mandir – Cultural icons

#### Education & Institutions

- SS Jain Subodh PG College – Walking distance
- University of Rajasthan – Premier educational hub
- Kanoria PG Mahila Mahavidyalaya

#### Healthcare

- Soni Hospital – Minutes away
- Nearby Clinics & Pharmacies – Within 1 km radius

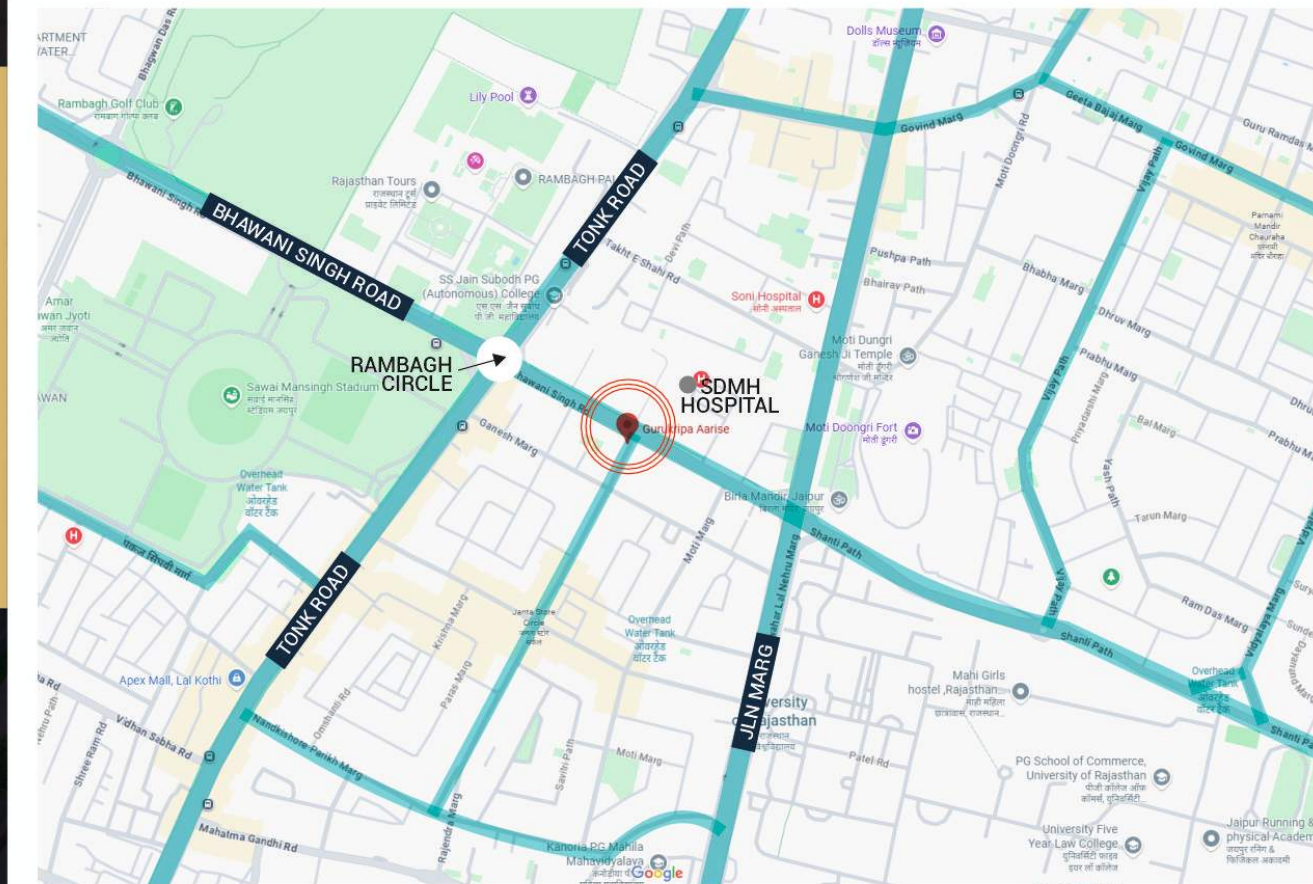
#### Shopping & Daily Convenience

- Apex Mall, Lal Kothi – 5 min drive
- D-Mart – For everyday essentials
- Local Markets & Cafes – At your doorstep

#### Connectivity & Roads

- Located on Bhawani Singh Road – a premium city artery
- Close to Tonk Road, Shanti Path, and JLN Marg
- Easy access to Railway Station, Airport & Bus Stand

Surrounding Highlights







Living inspired by *Your dreams*





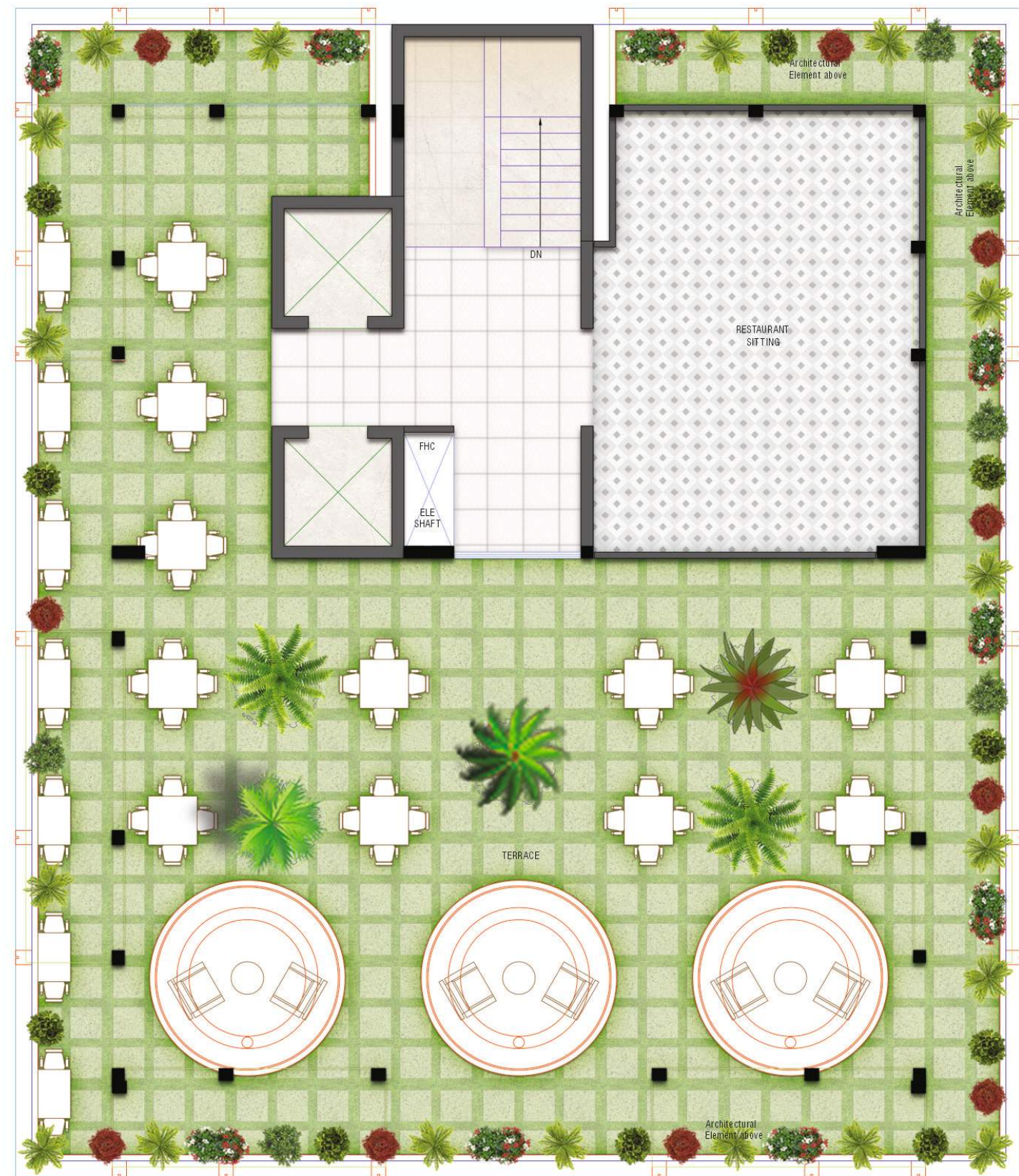
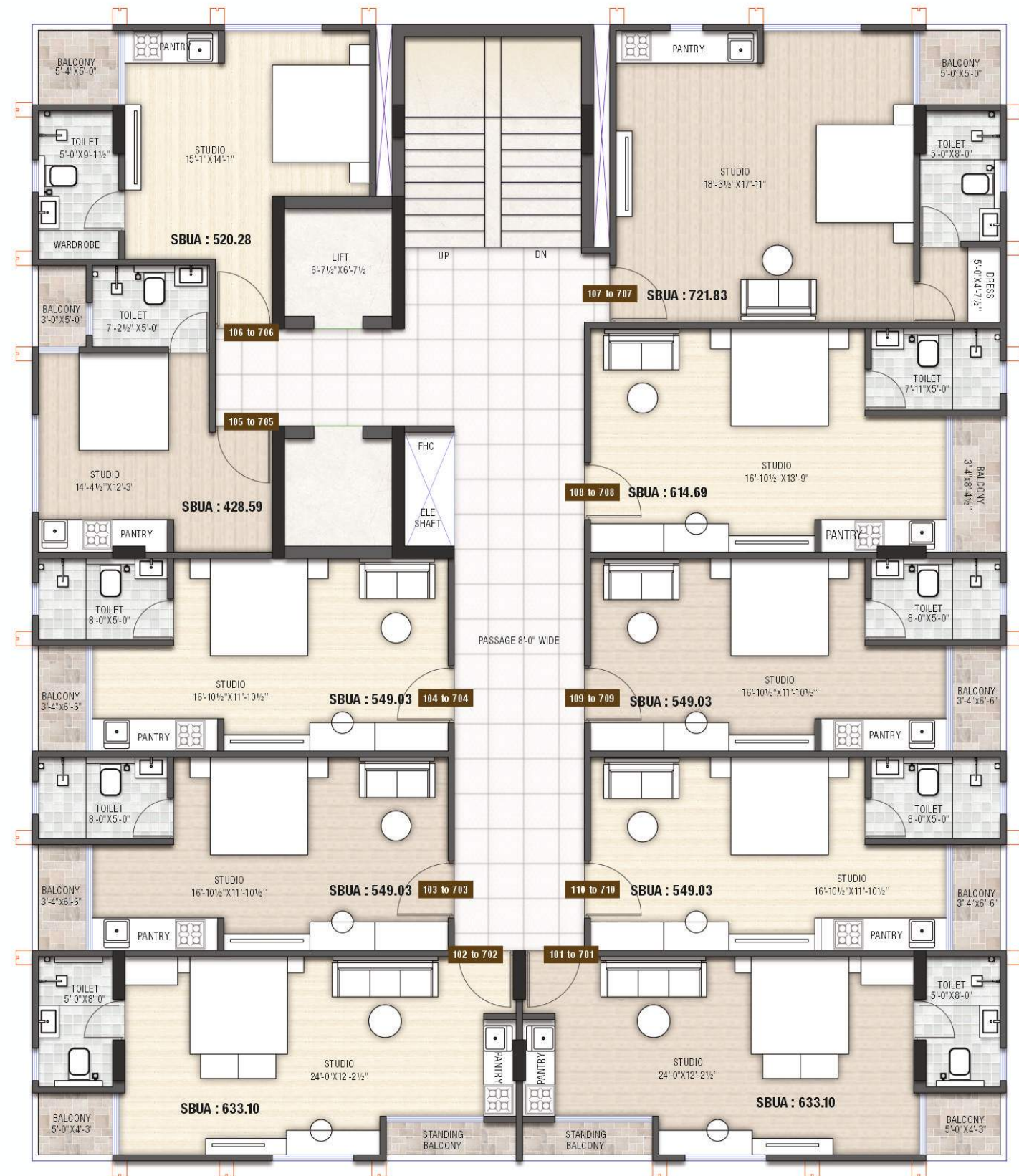
*Proudly*  
PLACED  
WHERE  
LUXURY LIVES







TYPICAL FLOOR PLAN  
(FIRST TO EIGHTH)



TERRACE FLOOR







A REFINED.  
LIBERATED  
WAY OF LIVING  
YOU'LL *Adore*







# Spaces that Shape a Beautiful Life

Your home should mirror the life you've built - poised, polished, and prestigious. Here, contemporary design meets a heritage location, giving you an unmatched blend of luxury interiors and a neighborhood you'll forever be proud of.

## Placed at the Finer Coordinates of *Life*

Set amidst a vibrant neighborhood and surrounded by elite infrastructure, this residence brings the city's best-offices, cafés, gyms, retail, and entertainment-right to your doorstep. Whether you're a working professional, a creative soul, or a frequent traveler, this space is designed to align with your aspirations and amplify your comfort







# Intimate Spaces. Infinite Views

Welcome to the crown jewel of your residence, a meticulously curated rooftop space designed for life's quieter luxuries. Whether you're sipping on your evening coffee, hosting refined gatherings, or simply soaking in the skyline, this rooftop is more than an amenity- it's an experience.

## Specifications

### STRUCTURE

- Earthquake resistant framed structure design as per Seismic Zone II.

### APARTMENT FEATURES

- Premium Class Italian flooring of Vitrified Tiles/Marble. 2.6x5 Ft.
- POP finish on wall & Designer Roof ceiling
- Acrylic Plastic paint on wall & ceiling.
- Designer Main Doors with Classy Mica

### WOOD WORK:

- Windows having UPVC Glass panels
- Tough ISI mark 30 mm flush doors.
- Well designed main door of 30 mm thickness.
- Premium, fitting of good quality on doors & windows.

### KITCHEN:

- Black Designer Granite working counters, SS sink.
- 2' tiles dado above the counter.

### TOILET:

- Designer tile in toilet.
- Premium C.P. Fitting of Continental Range.
- Ceramic tiles in toilet upto 8' height on walls.
- Anti-skid ceramic tiles on flooring.
- Counter wash basin in master Bedroom toilet.
- Jet in all Toilets.
- C.P. Accessories in Toilets of premium brand.
- 16 inches Designer Shower
- Bath Fitting PARRYWARE / ROCA JHONSON INTERNATIONAL / JAQUAR

### SECURITY SYSTEM:

- Intercom Facility In Each Flat
- Well managed 2 Layer Security Service.
- 24 hour security system

### ELECTRICAL:

- Modern electrical system with concealed Copper Wiring.

- Premium quality Switches & Accessories.
- TV/Telephone/A.C. point in all the rooms at appropriate places.
- Fan, Exhaust & Tubelite provided.
- Decorative light in Drawing & Dinning.

### GENERAL FEATURES:

- Well Designed Entrance Foyer & Lobby Area.
- Well designed landscaped garden
- Appropriate fire fighting arrangements.
- 2 Lifts for fast & easy commuting.
- 24 hour water supply through own tubewell.
- Rain water harvesting system.





## About Group

At Studio Realty, we take pride in crafting exceptional living spaces that reflect quality, innovation, and thoughtful design. With a legacy built on trust and integrity, we are committed to exceeding expectations and delivering projects that stand the test of time. Our dedicated team of professionals brings together expertise, creativity, and attention to detail to transform visions into reality. Whether it's a luxurious villa, a contemporary apartment, or a sustainable community, we strive to create homes that resonate with comfort, elegance, and lasting value.



**SHIVA RESIDENCY | Adarsh Nagar**  
2/3 BHK Premium Residential Flats  
Complete Project



**Guru Kripa Aaradhana | Mansarovar Metro Station**  
2/3/4 BHK Luxurious Residential Apartments  
Complete Project



**Guru Kripa Anand Villa | Patel Marg crossing**  
5 BHK Ultra Luxurious Villas  
Running Project



**Guru Kripa Aashiyana | Krishna Puri Mansarovar**  
3/4 BHK Ultra Luxurious Apartments  
Running Project





## A STUDIO REALTY

Registered Office : 450, Adarsh Nagar, Bees Dukan, Jaipur - 302004

✉ E-mail : enquiry@studiorealtygroup.in 📞 +91 99837 99837, 90575 93408

Architect

**STUDIO1503**

Architects, Interior Designers  
E-156 Sec. 3, Chitrakoot Scheme,  
Ajmer Road, Jaipur Ph: +91-141-3571121  
Email: studio1503@gmail.com

Vastu certified by

आचार्य दीदी डॉ सरस्वती गौड़  
(ज्योतिष, अंक ज्योतिष एवं वास्तुशास्त्र विशेषज्ञ)

**Acharya Didi Dr Saraswwati Gaur**  
(Astro science, numero science & vastu science Expert)

RERA Registration Number **RAJ/P/2025/4265**  
[www.rera.rajasthan.gov.in](http://www.rera.rajasthan.gov.in)

Disclaimer : This printed material does not constitute any form of agreement and all the purchases shall solely be governed by the terms of the agreement for sale.

All finishes are subject to change at the discretion of the Developer and / or the Architects.

The images used in this brochure are for illustration purpose only whereas the rendered images are close to actual. Map not to scale only for reference.